

LET

**BESSLER
WELDING**



SHOW YOU THE BENEFITS OF

AUTOMATED BOREWELDING & MACHINING

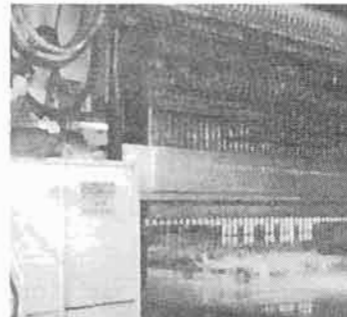
PRACTICAL SOLUTIONS FOR BOREWELDING CHALLENGES



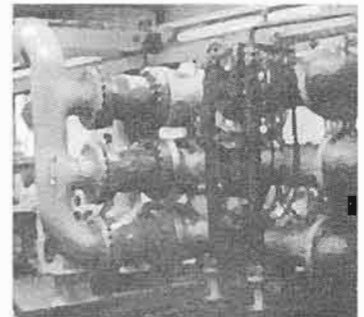
TRANSPORTATION



CONSTRUCTION



MANUFACTURING



**PUMPS / VALVES
POWER GENERATING**

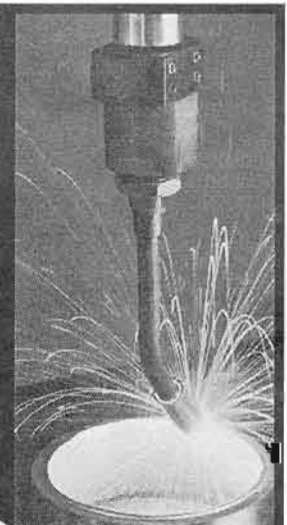
WELD AROUND INNER AND OUTER DIAMETERS



**BESSLER
WELDING**

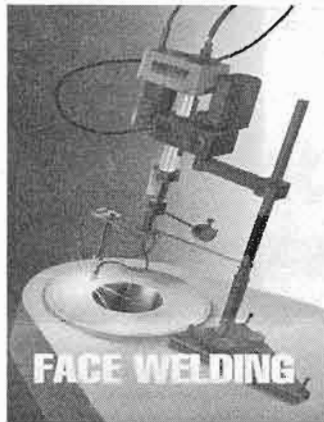
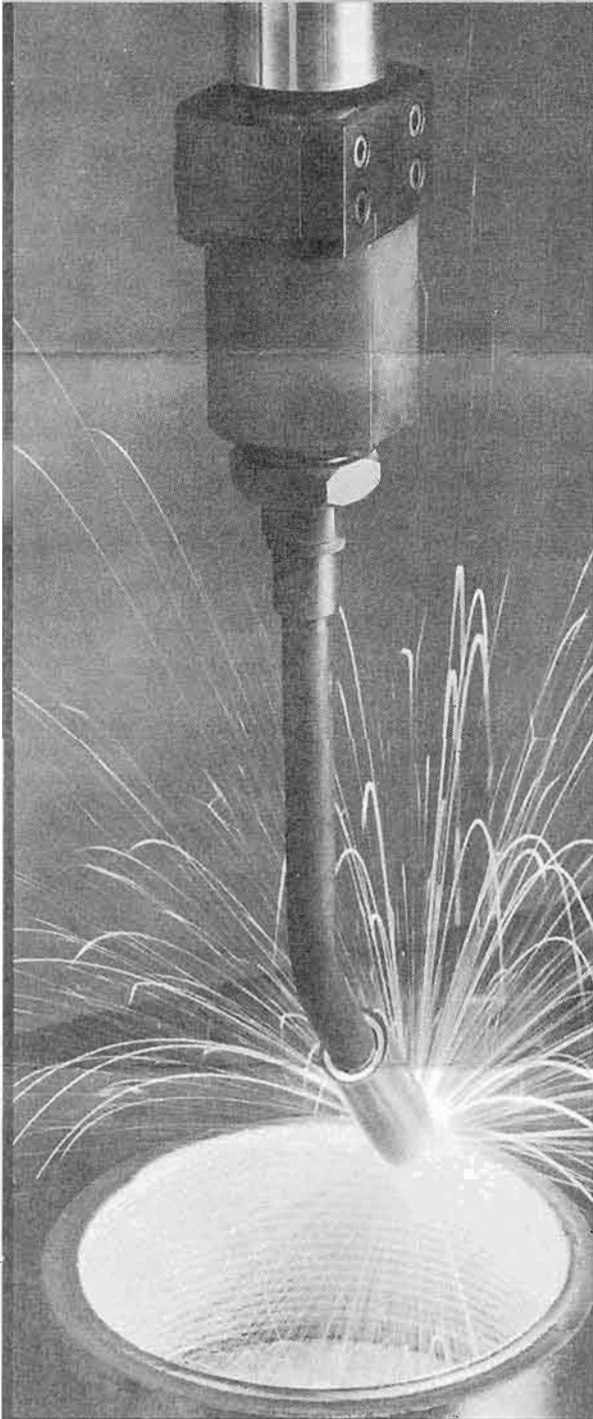
**AUTOMATED
BOREWELDING
& MACHINING**

**IS NOW
FEATURING**

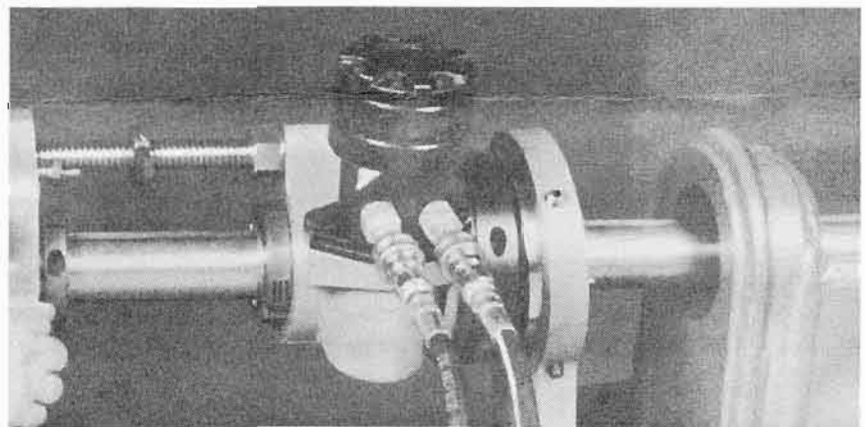


EXTEND AND RESTORE THE LIFE OF HEAVY EQUIPMENT

How Can Bessler Help You With Your Borewelding Needs?



- Weld Bores From 1½" to 12"
- Machine Bores From 1½" to 12"
- Machine Out of Round Bores
- Face Bosses From 2⅜" to 18" Dia.
- Install Bushings



**BESSLER
WELDING**
"WELDING SPECIALIST"
EXPERIENCED • INSURED

**5313 NORTH MAIN ST.
EAST PEORIA, IL 61611**

PH: (309) 699-6224

FAX: (309) 699-0626

TOLL FREE: 1(888) 699-6224

